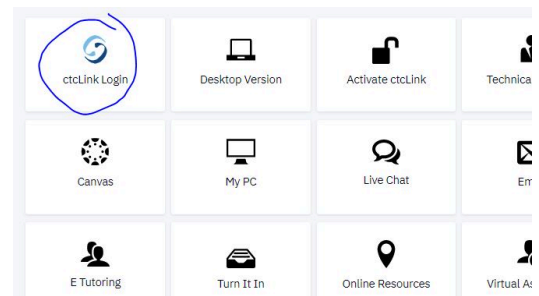
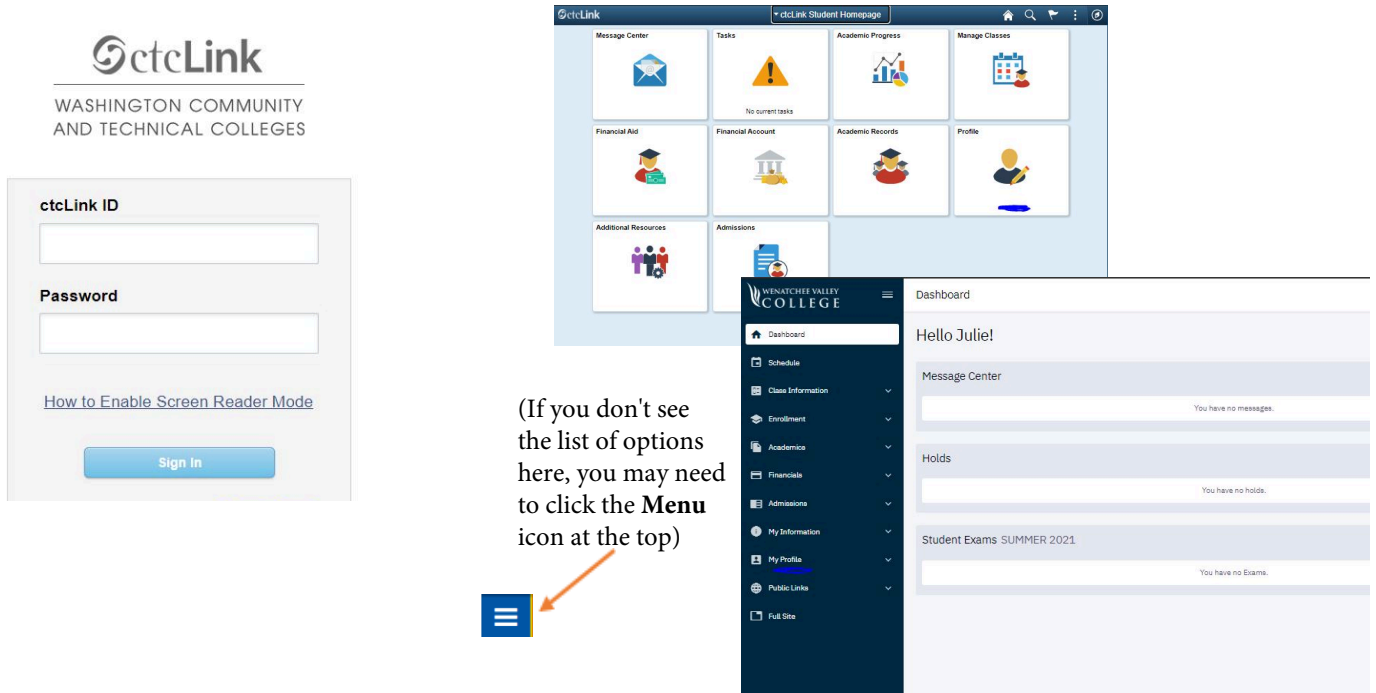


MyWVC - ctcLink - My Information

1. Click the **ctcLink Login** tile from the MyWVC portal.

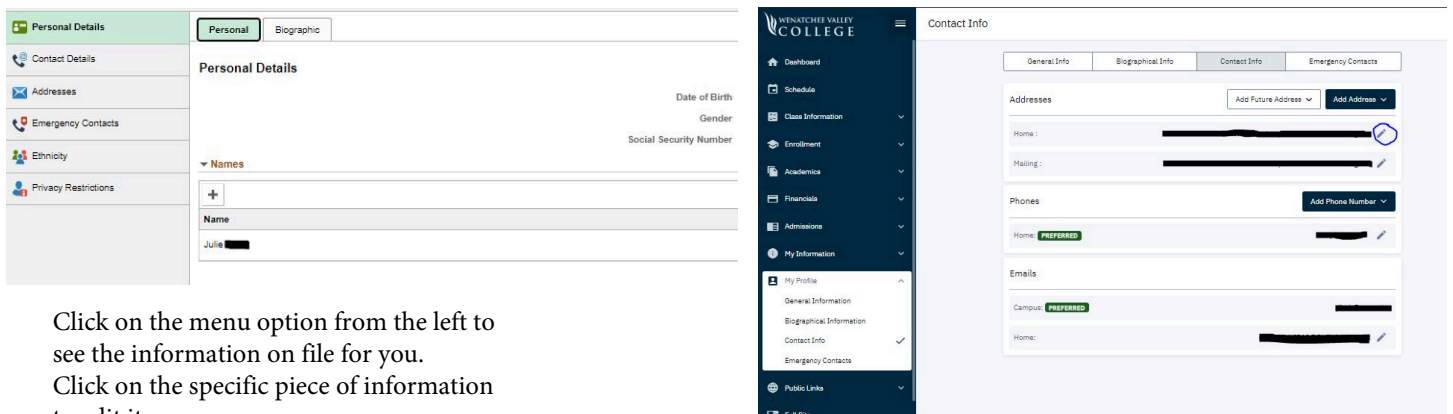


2. Login using your ctcLink ID and Password. You will arrive at a page that looks like one of these:



(If you don't see the list of options here, you may need to click the **Menu** icon at the top)

3. From the tile options or the left menu list, select **My Profile**. You should see a screen that looks something like this:



Click on the menu option from the left to see the information on file for you.
Click on the specific piece of information to edit it.
Be sure to click **save** when you are done making changes.



Click the **pencil** to edit the information.
Be sure to click **save** when you are done making changes.

