

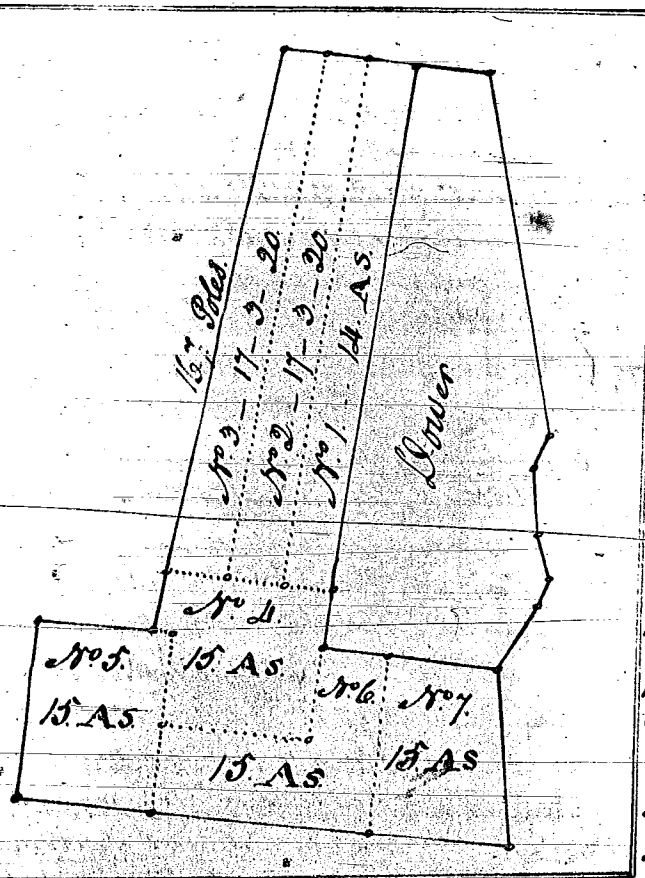
This day Charles Boman and Henry Boyle and Robert Robert Robason personally appeared before me and was sworn to discharge the duties imposed on them by the within order

Geo Collings J.P.S.C

At a County Court held for Spencer County on Monday the 3<sup>rd</sup> day of November 1834 This assignment of the Dower of Mary Steele in the lands of her late husband James Steele was returned and ordered to be recorded when from the same is established as the dower of the said Mary Steele in the lands of her late husband James Steele Deceased and it is ordered that the said Mary help the land to her assignee as aforesaid as and for her dower

Atteste Raptl Lancaster G.C.C

Said Steele's Division of Lands



The undersigned having been appointed by the Justice's County Court to divide the lands of James Steele amongst his heirs and legal representatives met on the premises on the day of September 1834 and having been sworn proceeded to lay off and make partition of the lands in the following manner and agreeable to the plat here laid down and members marked on said plat and drawn agreeable to the following report viz

Sott 1<sup>st</sup> was drawn by James Steele and contains 14 acres and is bounded as follows Beginning at a stone on a line of the dower and running with the dower

line North 12° East 167 poles to stone on James line thence with James line North 80° West 14 poles pole to a stone thence South 12° West 167 poles to a stone thence South 80° East 14 1/2 poles to the beginning

Sott 2<sup>nd</sup> was drawn by James Steele and contains 17 acres 3 Rods and 30 poles of land and is bounded as follows Beginning at a stone corner to Sott 1<sup>st</sup> thence North 12° East 167 poles to a stone thence North 80° West 14 1/2 poles to a stone thence South 14° West 167 poles to a stone thence South 8° East 19 poles to the beginning

Sott 3<sup>rd</sup> was drawn by James Steele and contains 17 acres 3 Rods and 30 poles of land and is bounded as follows Beginning at a stone corner to Sott 2<sup>nd</sup> thence North 14° East 167 poles to a stone on James line thence North 80° West 14 1/2 poles to an ash thence with Beards line South 16° West 167 poles to a stone thence South 80° East 19 poles to the beginning

Sott 4<sup>th</sup> was drawn by Gallatin Stansbury who married Sarah Steele and contains 15 acres and is bounded as follows Beginning at a stone on Beards line thence South 16° West 19 poles to two beeches corner to Beards thence South 80° East

6 poles to  
pole to a  
thence  
Sott 4<sup>th</sup>  
as follow  
10° west  
Dickson  
pole to  
Sott 4<sup>th</sup>  
as follow  
thence  
on the  
west 20°  
10° west  
Sott 4<sup>th</sup>  
and c  
on the  
south i  
to dowe  
The the  
Court i  
by bar

This d  
appear  
by the  
line a  
At a  
1834  
repres  
that  
who m  
a fig  
provid

Elizabeth  
Shelburne  
Inventory

A Tru  
of Eliza  
her ad  
To one  
To one  
To one  
To one